

Nut Splitters (Angular Head)

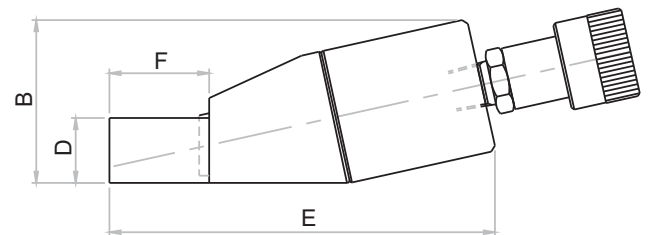
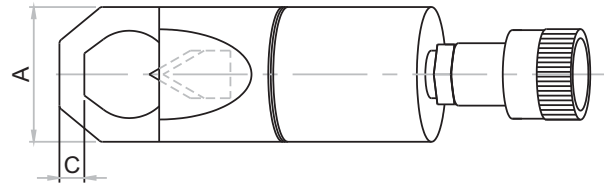
Range M6 - M48 / Max. Working Pressure 700 bar

HYDRAULIC TOOLS



Features / Application

- Designed to safely split seized / corroded nuts upto 44 HRC without damaging the bolt / stud by controlling the chisel movement
- Compact and ergonomic angled head design with spring return piston
- Worn out chisel can be re-sharpened or replaced
- Useful where hot work is prohibited



ONSA Series - **O** Orione **N** Nut **S** Splitter **A** Angular head **1018** Nut across flat

Model	Stud diameter		Nut A/F		A (mm)	B (mm)	C (mm)	D (mm)	E (mm)	F (mm)	Wt. (Approx) (kg)
	(mm)	(inch)	(mm)	(inch)							
ONSA-1018	M6-M12	1/4" - 3/8"	10-18	1/2" - 11/16"	40	52	8	20	130	30	1
ONSA-1824	M12-M16	3/8" - 9/16"	18-24	11/16" - 15/16"	54	67	12	24	163	41	2
ONSA-2432	M16-M22	9/16" - 3/4"	24-32	15/16" - 1 1/4"	64	79	13	30	187	52	3
ONSA-3241	M22-M27	3/4" - 1"	32-41	1 1/4" - 1 5/8"	78	94	20	37	219	69	4.5
ONSA-4150	M27-M33	1" - 1 1/4"	41-50	1 5/8" - 2"	95	113	21	45	265	78	9.6
ONSA-5060	M33-M39	1 1/4" - 1 1/2"	50-60	2" - 2 3/8"	106	128	25	54	297	91	13
ONSA-6075	M39-M48	1 1/2" - 1 7/8"	60-75	2 3/8" - 2 15/16"	156	185	27	75	357	110	34

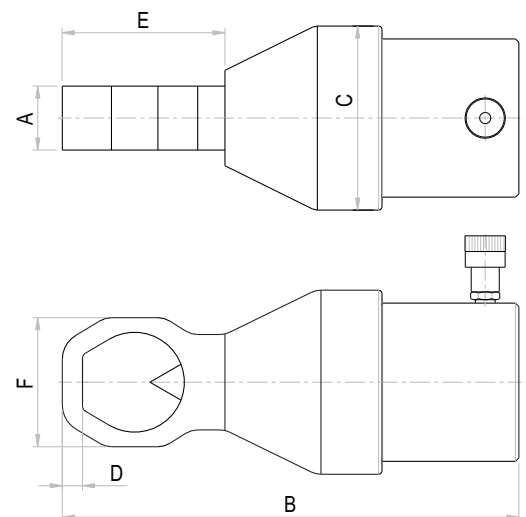
■ Higher capacity and customized solutions on request. ■ Specifications are subject to change due to continual improvement.
 ■ Capacity and Stroke specified are maximum safe limits. As safe practice, use at 80% of rating.

Nut Splitters (Straight Head)

Range M10 - M90 / Max. Working Pressure 700 bar

Features / Application

- Designed to safely split seized / corroded nuts upto 44 HRC without damaging the bolt / stud by controlling the chisel movement
- Compact and straight head design with spring return piston
- Worn out chisel can be re-sharpened or replaced
- Useful where hot work is prohibited



ONSS Series - **O** Orione **N** Nut **S** Splitter **S** Straight head **1636** Nut across flat

Model	Stud diameter		Nut A/F		A (mm)	B (mm)	C (mm)	D (mm)	E (mm)	F (mm)	Wt. (Approx) (kg)
	(mm)	(inch)	(mm)	(inch)							
ONSS-1636	M10-M24	3/8" - 7/8"	16-36	11/16" - 17/16"	38	271	105	10	92	66	14
ONSS-3651	M22-M33	7/8" - 1 1/4"	36-51	1 7/16" - 2"	38	287	108	13	109	86	15
ONSS-4660	M30-M39	1 1/8" - 1 1/2"	46-60	1 13/16" - 2 3/8"	57	386	164	15	125	102	30
ONSS-5770	M36-M45	1 3/8" - 1 3/4"	57-70	2 1/8" - 2 3/4"	57	407	164	18	145	115	31
ONSS-7089	M45-M60	1 3/4" - 2 1/4"	70-89	2 3/4" - 3 1/2"	78	465	214	22	154	146	75
ONSS-7998	M52-M68	2" - 2 1/2"	79-98	3 1/8" - 3 7/8"	80	487	214	22	162	160	78
ONSS-95108	M64-M72	2 1/2" - 2 3/4"	95-108	3 7/8" - 4 1/4"	95	579	250	29	185	192	120
ONSS-114127	M72-M80	2 3/4" - 3 1/4"	114-127	4 1/4" - 5"	105	590	250	29	185	229	130
ONSS-124136	M80-M90	3 1/4" - 3 1/2"	124-136	5" - 5 1/4"	105	601	250	33	198	238	165

■ Higher capacity and customized solutions on request. ■ Specifications are subject to change due to continual improvement.
 ■ Capacity and Stroke specified are maximum safe limits. As safe practice, use at 80% of rating.